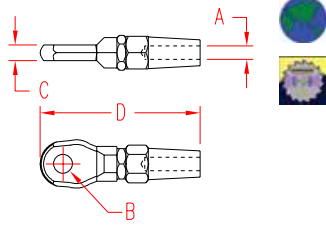


QUICK ATTACH™ EYE



316 STAINLESS STEEL



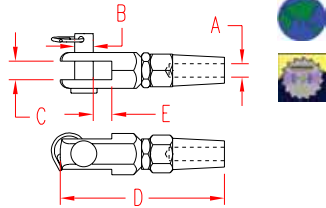
ITEM	A	B	C	D	WT
	(wire size)				(lb)
S0761-0003	1/8"	0.25"	0.23"	2.28"	0.10
S0761-0004	5/32"	0.33"	0.27"	2.68"	0.17
S0761-0005	3/16"	0.41"	0.31"	3.19"	0.23
S0761-0007	1/4"	0.48"	0.35"	3.82"	0.36
S0761-0009	5/16"	0.56"	0.41"	4.76"	0.60
S0761-0010	3/8"	0.64"	0.51"	5.23"	0.98
S0761-0013	1/2"	0.76"	0.59"	6.10"	1.50

NOTE:
MECHANICAL SWAGE FITTING ALLOWS VERY FAST ATTACHMENT TO ANY TYPE OF CABLE (1X19, 7X19, OR 7X7) USING ONLY SIMPLE TOOLS. JAW AND EYE WILL FIT TOGETHER. WLL IS DETERMINED BY WLL OF WIRE USED.

QUICK ATTACH™ JAW



316 STAINLESS STEEL



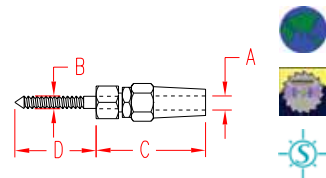
ITEM	A	B	C	D	E	WT
	(wire size)					(lb)
S0762-0003	1/8"	0.31"	0.23"	2.48"	0.23	0.12
S0762-0004	5/32"	0.31"	0.31"	2.87"	0.31	0.22
S0762-0005	3/16"	0.39"	0.39"	3.27"	0.39	0.32
S0762-0007	1/4"	0.47"	0.47"	3.74"	0.47	0.52
S0762-0009	5/16"	0.55"	0.55"	4.65"	0.55	0.77
S0762-0010	3/8"	0.63"	0.63"	5.24"	0.63	1.38
S0762-0013	1/2"	0.71"	0.74"	6.10"	0.74	2.10

NOTE:
MECHANICAL SWAGE FITTING ALLOWS VERY FAST ATTACHMENT TO ANY TYPE OF CABLE (1X19, 7X19, OR 7X7) USING ONLY SIMPLE TOOLS. JAW AND EYE WILL FIT TOGETHER. WLL IS DETERMINED BY WLL OF WIRE USED.

QUICK ATTACH™ WOOD STUD



316 STAINLESS STEEL



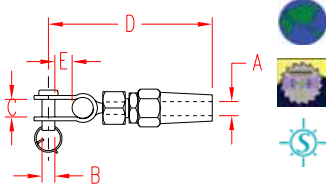
ITEM	A	B	C	D	WT	
	(wire size)					(lb)
S0777-0703	1/8"	1/4"	1.46"	2.00"	0.11	
S0777-0704	5/32"	1/4"	1.68"	2.00"	0.13	
S0777-0905	3/16"	5/16"	2.02"	2.25"	0.24	

NOTE:
MECHANICAL SWAGE FITTING ALLOWS VERY FAST AND SIMPLE ATTACHMENT OF CABLE (1X19, 7X19, OR 7X7) TO WOOD USING ONLY SIMPLE TOOLS. WLL IS DETERMINED BY WLL OF WIRE USED.

QUICK ATTACH™ TOGGLE



316 STAINLESS STEEL



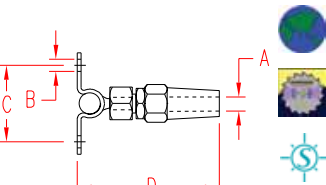
ITEM	A	B	C	D	E	WT
	(wire size)					(lb)
S0778-0703	1/8"	0.23"	0.35"	1.50"	0.45	0.11
S0778-0704	5/32"	0.23"	0.35"	1.75"	0.45	0.13
S0778-0905	3/16"	0.31"	0.40"	2.12"	0.58	0.24
S0778-1007	1/4"	0.37"	0.56"	2.50"	0.75	0.37

NOTE:
MECHANICAL SWAGE FITTING ALLOWS SELF-ALIGNING FOR A MORE FLEXIBLE CONNECTION SUCH AS BOAT LIFELINES OR ARCHITECTURAL APPLICATIONS. VERY FAST AND SIMPLE ATTACHMENT TO CABLE (1X19, 7X19, OR 7X7). WLL IS DETERMINED BY WLL OF WIRE USED.

QUICK ATTACH™ WALL TOGGLE



316 STAINLESS STEEL



ITEM	A	B	C	D	WT
	(wire size) (fastener)				(lb)
S0779-0703	1/8"	1/4"	1.58"	2.00"	0.10
S0779-0704	5/32"	1/4"	1.58"	2.25"	0.12
S0779-0905	3/16"	5/16"	1.75"	2.75"	0.22
S0779-1007	1/4"	3/8"	2.00"	3.50"	0.35

NOTE:
MECHANICAL SWAGE FITTING ALLOWS ATTACHMENT TO A FLAT SURFACE WITH ALIGNMENT THROUGH 160° +/- . VERY FAST AND SIMPLE ATTACHMENT TO CABLE (1X19, 7X19, OR 7X7). WLL IS DETERMINED BY WLL OF WIRE USED.



Key:



Made in USA



Drop Forged



Precision Machined



Wire Formed



Suncor Exclusive



Import



Precision Cast



Stamped



Load Rated

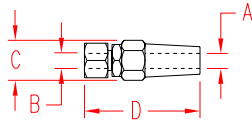


New Product

ORDERS ONLY: 800-394-2222 (USA)
877-495-5510 (CANADA)

QUICK ATTACH RECEIVER™

316 STAINLESS STEEL

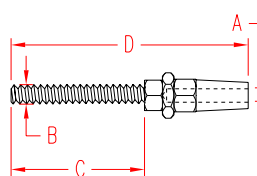


ITEM	A (wire size)	B (thread)	C	D	WT (lb)
S0770-0703	1/8"	1/4"	1.46"	0.54"	0.07
S0770-0704	5/32"	1/4"	1.68"	0.63"	0.12
S0770-0905	3/16"	5/16"	2.02"	0.75"	0.18
S0770-1007	1/4"	3/8"	2.50"	0.84"	0.28

NOTE:
MECHANICAL SWAGE FITTING ALLOWS VERY FAST AND SIMPLE ATTACHMENT USING A BOLT OR STUD THROUGH A PLATE. WLL IS DETERMINED BY WLL OF WIRE USED. FOR USE WITH BOLTS OR SIMILAR FASTENERS.

QUICK ATTACH STUD™

316 STAINLESS STEEL



ITEM	A (wire size)	B (thread)	C	D	WT (lb)
UNF RIGHT HAND					
S0771-0703	1/8"	1/4"	1.85"	3.35"	0.11
S0771-0704	5/32"	1/4"	1.85"	3.62"	0.13
S0771-0904	5/32"	5/16"	2.25"	4.00"	0.15
S0771-0905	3/16"	5/16"	2.25"	4.37"	0.21
S0771-1005	3/16"	3/8"	2.48"	4.60"	0.23
S0771-1007	1/4"	3/8"	2.48"	5.04"	0.33
S0771-1307	1/4"	1/2"	3.15"	5.70"	0.39
S0771-1309	5/16"	1/2"	3.15"	6.38"	0.63
S0771-1609	5/16"	5/8"	3.94"	7.17"	0.75
S0771-1610	3/8"	5/8"	3.94"	7.40"	0.95
S0771-2013	1/2"	3/4"	4.72"	8.74"	1.45

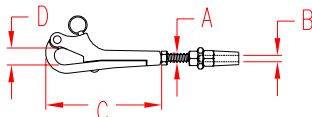
ITEM	A (wire size)	B (thread)	C	D	WT (lb)
UNF LEFT HAND					
S0772-0703	1/8"	1/4"	1.85"	3.35"	0.11
S0772-0704	5/32"	1/4"	1.85"	3.62"	0.13
S0772-0904	5/32"	5/16"	2.25"	4.00"	0.15
S0772-0905	3/16"	5/16"	2.25"	4.37"	0.21
S0772-1005	3/16"	3/8"	2.48"	4.60"	0.23
S0772-1007	1/4"	3/8"	2.48"	5.04"	0.33
S0772-1307	1/4"	1/2"	3.15"	5.70"	0.39
S0772-1309	5/16"	1/2"	3.15"	6.38"	0.63
S0772-1609	5/16"	5/8"	3.94"	7.17"	0.75
S0772-1610	3/8"	5/8"	3.94"	7.40"	1.45

ITEM	A (wire size)	B (thread)	C	D	WT (lb)
METRIC RIGHT HAND					
S0775-0703	3 mm	6 mm	47 mm	85 mm	0.11
S0775-0704	4 mm	6 mm	47 mm	92 mm	0.13
S0775-0904	4 mm	8 mm	57 mm	102 mm	0.15
S0775-0905	5 mm	8 mm	57 mm	111 mm	0.21
S0775-1005	5 mm	10 mm	63 mm	117 mm	0.23
S0775-1007	6 mm	10 mm	63 mm	128 mm	0.33
S0775-1307	6 mm	12 mm	80 mm	145 mm	0.39
S0775-1309	8 mm	12 mm	80 mm	162 mm	0.63
S0775-1609	8 mm	16 mm	100 mm	182 mm	0.75
S0775-1610	10 mm	16 mm	100 mm	188 mm	0.95
S0775-2013	12 mm	20 mm	120 mm	222 mm	1.45

NOTE:
MECHANICAL SWAGE FITTING ALLOWS VERY FAST AND SIMPLE ATTACHMENT TO CABLE (1X19, 7X19, OR 7X7) USING ONLY SIMPLE TOOLS. WLL IS DETERMINED BY WLL OF WIRE USED.

PELICAN HOOK W/ QUICK ATTACH™

316 STAINLESS STEEL



ITEM	A (thread)	B (wire)	C	D	WT (lb)
S0162-QA07	1/4"	1/8"	2.96"	0.50"	0.22
S0162-QA08	5/16"	3/16"	3.87"	0.64"	0.44
S0162-QA13	1/2"	1/4"	6.00"	1.00"	1.30

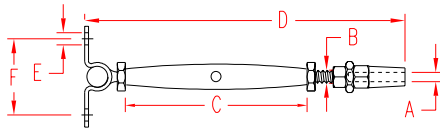
NOTE:
ALL THREADS ARE RIGHT HAND "UNF". S0771-SERIES QUICK ATTACH™ STUDS ARE USED FOR THIS ASSEMBLY. INFORMATION REGARDING THE S0771-SERIES CAN BE FOUND ABOVE.



TEL 508-732-9191 • FAX 508-732-9798 • ORDERS ONLY 800-394-2222

www.suncorstainless.com

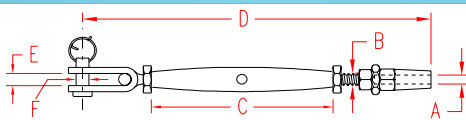
QA™ STUD & WALL MOUNT 316 STAINLESS STEEL



ITEM	A	B	C	D	E	F	WT
	(wire size) (thread)						(lb)
S0766-0703	1/8"	1/4"	4.20"	6.75"	0.25"	1.58"	0.25
S0766-0704	5/32"	1/4"	4.20"	6.75"	0.25"	1.58"	0.27
S0766-0905	3/16"	5/16"	4.32"	7.30"	0.31"	1.75"	0.50
S0766-1007	1/4"	3/8"	4.90"	8.00"	0.38"	2.00"	0.74

NOTE:
MECHANICAL SWAGE FITTING ALLOWS VERY FAST ATTACHMENT TO ANY TYPE OF CABLE (1X19, 7X19, OR 7X7) USING ONLY SIMPLE TOOLS. WLL IS DETERMINED BY WLL OF WIRE USED.

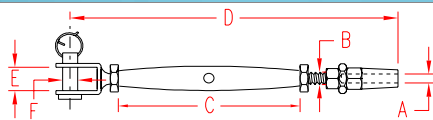
QA™ STUD & TOGGLE 316 STAINLESS STEEL



ITEM	A	B	C	D	E	F	WT
	(wire size) (thread)						(lb)
S0764-0703	1/8"	1/4"	4.20"	7.25"	0.35"	0.23	0.25
S0764-0704	5/32"	1/4"	4.20"	7.50"	0.35"	0.23	0.27
S0764-0904	5/32"	5/16"	4.32"	8.00"	0.40"	0.30	0.44
S0764-0905	3/16"	5/16"	4.32"	8.31"	0.40"	0.30	0.50
S0764-1005	3/16"	3/8"	4.90"	9.25"	0.56"	0.37	0.64
S0764-1007	1/4"	3/8"	4.90"	9.75"	0.56"	0.37	0.74
S0764-1307	1/4"	1/2"	5.87"	11.00"	0.63"	0.47	1.30
S0764-1309	5/16"	1/2"	5.87"	12.25"	0.63"	0.47	1.54
S0764-1609	5/16"	5/8"	7.50"	15.00"	0.80"	0.62	2.75
S0764-1610	3/8"	5/8"	7.50"	15.75"	0.80"	0.62	2.95

NOTE:
MECHANICAL SWAGE FITTING ALLOWS VERY FAST ATTACHMENT TO ANY TYPE OF CABLE (1X19, 7X19, OR 7X7) USING ONLY SIMPLE TOOLS. WLL IS DETERMINED BY WLL OF WIRE USED.

QUICK ATTACH™ STUD & JAW 316 STAINLESS STEEL



ITEM	A	B	C	D	E	F	WT
	(wire size) (thread)						(lb)
S0765-0703	1/8"	1/4"	4.20	7.00	0.36	0.23	0.24
S0765-0704	5/32"	1/4"	4.20	7.25	0.36	0.23	0.26
S0765-0904	5/32"	5/16"	4.32	7.50	0.42	0.31	0.42
S0765-0905	3/16"	5/16"	4.32	8.00	0.42	0.31	0.48
S0765-1005	3/16"	3/8"	4.90	8.75	0.48	0.36	0.62
S0765-1007	1/4"	3/8"	4.90	9.25	0.48	0.36	0.71
S0765-1307	1/4"	1/2"	5.87	11.50	0.55	0.47	1.50
S0765-1610	3/8"	5/8"	5.87	11.00	0.55	0.47	1.25

NOTE:
MECHANICAL SWAGE FITTING ALLOWS VERY FAST ATTACHMENT TO ANY TYPE OF CABLE (1X19, 7X19, OR 7X7) USING ONLY SIMPLE TOOLS. WLL IS DETERMINED BY WLL OF WIRE USED.



3 Easy Steps

1. Unscrew and verify components.
2. Place cable through end fitting. Insert cable 1/4" to 3/8" through cone fitting. Place washer over cable and assemble.
3. Tighten lock screw. You're done!

Why Would You Want to Use Mechanical Fittings?

"Quick Attach™" Fittings are precision machined from 316 stainless steel and Lloyds approved under #97/00200 for holding power of at least 90% of the maximum breakload of the wire rope used. Special attention has been placed on the strength of the terminals, which guarantees that the wire will always break before the fitting even gets distorted.

The advantage of "Quick Attach™" over conventional fittings is the arrangement of the wedges on the outside of the cable which makes assembly much easier and allows different types of wire to be used with the same fitting.

"Quick Attach™" fittings are ideal for repair of rigging without swaging and for many other industrial, or architectural uses where the exact length of the cable cannot be determined beforehand or where assembly needs to take place on-site.



ORDERS ONLY: 800-394-2222 (USA)
877-495-5510 (CANADA)

Key:



Made in USA



Drop Forged



Precision Machined



Wire Formed



Suncor Exclusive



Import



Precision Cast



Stamped



Load Rated



New Product